

FLOORING FOR WINERIES

Basalt flooring – beauty, resilience, and durability!





Winery floor, Italy



Smooth tiles, wine cellar in South Moravia



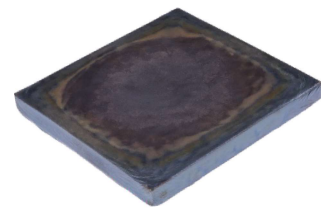
Floor tiles in the Vinárstvo Premium Vráble, Slovakia



Baloun winery in Velké Pavlovice

BASALT FLOOR TILES IN WINERIES

Basalt tiles are an attractive flooring option for winemakers, and not only because of their aesthetic appearance. Each tile is unique due to the individuality of the finish of the natural stone and hand craftsmanship, somewhat reminiscent of the winemaking process itself. It is not just the visual aspect of the basalt tiles that is important; their unique properties are ideal for use in areas where wine is pressed, fermented and stored while achieving a beautiful contrast when with traditional brickwork. Similarly, combining natural stone walls or arches with basalt tiles on the floor looks fantastic, combining practicality and aesthetics in one!



smooth tile



type B

TASTING EVENTS ON BASALT FLOORING

The use of basalt tiles in rooms designed for wine presentation and tasting will add appeal and character. The properties of basalt flooring and the aesthetic effect of this natural material will create a unique atmosphere to enjoy the finest wines.

THE MOST COMMONLY USED BASALT TILE DESIGNS

Smooth-faced plain tiles are produced in sizes of 200mm x 200mm or 250mm x 250 mm with a thickness of 22mm or 30mm. Where required, anti-slip tiles are also available in sizes 200mm x 200mm or 250mm x 250mm with a thickness of 30 mm, type B, C or D. For floor-to-wall junctions, we recommend using L-shaped plinth tiles with a corner radius for easier cleaning and maintenance. Plinth tiles are available in lengths of 200mm or 250mm, with different heights and thicknesses dependent on the floor design. We can also create custom-made shaped pieces for lining internal and external corners.



L-piece (plinth tile)



BASALT TILES FOR HARSH CONDITIONS

Basalt tiles can withstand the harshest environments. Basalt has high strength, chemical resistance, impact and abrasion resistance with practically unlimited durability. Add the unique look and design of the tile, and you have all the main characteristics of exceptional floors made of basalt, a pure and sustainable natural stone. The world's largest producer of cast basalt is EUTIT, based in Stará Voda, Czech Republic, where basalt products have been cast since 1951.

CUTTING BASALT TILES

Basalt is an extremely hard material, reaching grade 8 on the Mohs scale (diamond = grade 10). It is therefore essential to use diamond-tipped blades designed for cutting hard materials like basalt. Operators should use a water-cooling cutting process to avoid tiles overheating, melting, or producing spark flashes. It is important to follow and maintain safe operational practices, and always following the tool manufacturer's recommendations during the cutting process.

CHANGE IN COLOUR MAY OCCUR

The use of cleaning agents containing alkalis and acids can affect or accentuate the characteristic shades of the basalt tiles and their surface finish. This change in colour is not a functional problem, but purely cosmetic. The resilience and properties of the tiles remain unaffected. On request and if desired, we can prepare the tiles to be resistant to any such shade changes.

EUFIX TAILOR-MADE SYSTEM FOR THE PERFECT FLOOR

To take full advantage of the benefits of EUTIT cast basalt tiles, proper professional installation and grouting are crucial. To achieve the optimal finished appearance, it is essential to lay the tiles with the utmost precision. We supply a wide range of EUFIX bonding materials for this purpose. Following the correct and recommended methodology for installing the basalt tiles and their grouting materials is key to a successful construction of the winery floor and will consistently ensure results that will enhance the overall beauty, resilience and durability of the entire system.

MATERIALS RECOMMENDED FOR INSTALLATION

1 **Eufix I** mortar is used for bedding and laying basalt tiles on a concrete substrate. Eufix I has a high bearing capacity with good adhesion to non-absorbent materials like basalt. Mortar bed thicknesses range from 5 to 30 mm. The mortar bed will eliminate any thickness tolerance of the basalt tiles (± 2 mm).

2 **Eufix EP-JF1** is for grouting basalt tiles, a new generation epoxy-based, chemical-resistant grout (fresh grout can be washed with water after grouting). The recommended joint width minimum is 5 mm and it is important to fill the joints to at least $\frac{2}{3}$ of the tile thickness.

3 For the joint between the stainless-steel drainage fittings and the basalt tiles, we recommend using **Eufix PU 40**, a permanently flexible, chemical-resistant polyurethane adhesive.



Tiled columns, floor drainage, winery in Italy



Tiles 250x250 mm – floor and stairs



Wine cellar in Italy



smooth tile



type C



type D



L-piece (plinth tile)

MAIN ADVANTAGES OF BASALT PRODUCTS

Chemical resistant, impact resistant, high crushing strength, 0% water absorption, frost resistant, high durability, abrasion resistant, an organic and natural material, environmentally and hygienically safe. 100% recyclable in production.

Scratch hardness of surface according to Mohs (ČSN EN 101)	min. 8
Crushing strength (ČSN EN 993-5)	min. 300 to 450 MPa
Permissible heat load	max. 400°C
Bulk density (ČSN EN 993-1)	2900 – 3000 kg.m ³

EUFIX SYSTEM – OTHER MATERIALS

Since not all floor areas in wineries are subject to chemically aggressive conditions, our EUFIX product range is also suitable for bonding basalt tiles in general areas such as wine-tasting rooms or winery shops and cafés. For these applications, we recommend using EUFIX F flexible adhesive and the corresponding EUFIX F grout available in black or grey.



REFERENCES

Our basalt flooring systems have not only gained popularity for their use in industrial winemaking facilities. Their unique and attractive finish makes them ideally suitable for use as the flooring material to choose for elegant-looking wine-tasting areas and public sales rooms.

Our clients, originally in the Bohemian and Moravian regions of the Czech Republic, have utilised our floor tiles for their practical properties, but also for their unique and bespoke attractive design. You can now find basalt floor tiles installed in prestigious European wine-producing countries such as Italy, Austria, Slovakia, Poland and others. Satisfied customer references include the following wineries: Gaja (Barbaresco, Italy), Ca' Marcanda (Bolgheri, Italy), Cereo (Alba, Italy), Bohemia Sekt (Starý Plzenec, Czech Republic), Baloun (Hustopeče and Velké Pavlovice, Czech Republic), Stanislav Mádl (Velké Bílovice, Czech Republic) and Vinařství Prémium Vráble (Vráble, Slovakia).



EUTIT s.r.o.
No. 196
353 01 Mariánské Lázně
Czech Republic
www.eutit.com

ISO 9001

